



NBitAI

CRYPTO AI AGENT White Paper

We are a nexgen AI solutions company building disruptive products for various industry verticals. We help businesses harness the full power of Ai and Blockchain.



www.NBitAI.com

Table Of Contents

Introduction		Development Roadmap	20
Executive Summary	04	Short-Term Goals	20
Introduction	04	Mid-Term Targets	20
Market Analysis	05	Long-Term Vision	20
Industry Demand	05		
Competitive Landscape	05		
Platform Architecture	06	Governance Model	21
Technical Overview	06	Key Features	21
AI Agent Marketplace	06	Governance in Action	21
Token Integration	07	Benefits of Decentralized Governance	21
Decentralised Governance	07		
Key aspects of token integration	07		
Tokenomics	08	Security & Compliance	22
Token Utility	08	Smart Contract Audits	22
Supply and Distribution	08	Data Privacy	22
		Regulatory Compliance	22
Use Cases	09	Community & Ecosystem	23
AgroTech	10	Developer Engagement	23
HealthTech	12	Partnerships	23
EduTech	14	User Acquisition	23
PropTech	15		
FinTech	16	Risk Assessment	24
RetailTech	17	Developer Engagement	24
Logitech	18	Partnerships	24
LegalTech	19	User Acquisition	24
Narrative Ending		Frequently Asked Questions	



NBitAI

Executive Summary

Rapid digital transformation, professionals across industries increasingly turn to AI to improve decision-making, enhance productivity, and reduce costs. However, existing AI solutions are often generic, centralised, and unable to address the specific challenges faced by different sectors.

NBitAI aims to revolutionise the way industries interact with AI by developing decentralised, industry-specific AI agents powered by the Binance Smart Chain (BSC). These AI agents act as personalised assistants tailored to the unique needs of sectors such as Agriculture, Healthcare, Real Estate, FinTech, Retail, Logistics, and more. The platform's native token, \$nBit, drives the ecosystem by facilitating access to AI services, incentivising user contributions, and enabling decentralised governance.

NBitAI's mission is to create "Jarvis"-like AI assistants for professionals in every major industry, providing actionable insights, automating workflows, and unlocking new opportunities. By leveraging blockchain technology, NBitAI ensures that AI services are not only efficient and effective but also accessible and secure.

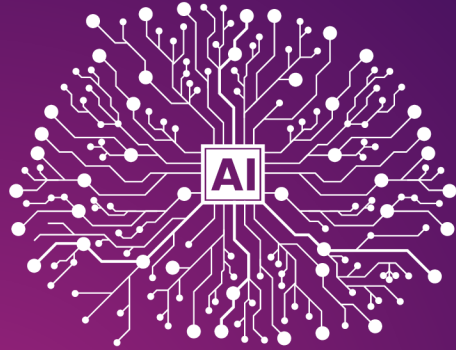
Key Highlights of NBitAI

- **Industry-Specific Crypto AI Agents:** Tailored solutions that address sector-specific challenges.
- **Decentralized and Transparent:** Built on blockchain technology for enhanced security, transparency, and cost-efficiency.
- **Empowered Community:** Users and token holders actively shape the platform's future through decentralized governance.

"Join us in transforming the future of AI with NBitAI your partner in innovation and industry-specific solutions."

Introduction

AI has revolutionized numerous sectors, but many of the available solutions remain overly generic and centralized. These traditional AI services fail to address the unique needs of specific industries, limiting their impact on real-world challenges. Furthermore, centralized models pose risks such as high operational costs, data privacy concerns, and limited access for smaller enterprises.



NBitAI takes a fresh approach by creating customised, decentralised AI solutions in three key areas:

1. **Games:** Using AI to create gamified learning experiences that increase knowledge retention and engagement.
2. **Education:** Providing AI-driven tools for personalized learning paths and parental support in early childhood education.
3. **Industry-Specific Crypto AI Agents:** Tailored Crypto AI Agents that address the unique needs of sectors such as agriculture, healthcare, real estate, and more.

The introduction of decentralised Crypto AI Agents opens new doors for professionals, enabling them to make better decisions, automate routine tasks, and optimize workflows. Whether it's a farmer seeking weather predictions or a healthcare provider needing patient diagnostics, NBitAI's tailored solutions are built to meet these specific needs.

Through its unique approach, NBitAI addresses three critical challenges:

1. **Customisation:** Each Crypto AI Agent is tailored to the unique requirements of its respective industry.
2. **Accessibility:** Decentralization ensures that AI services are available to all businesses, regardless of size.
3. **Security and Privacy:** The use of blockchain technology guarantees secure data management and compliance with data privacy regulations.

NBitAI's introduction marks a pivotal shift in how industries leverage AI technology, bringing personalized, secure, and effective solutions directly to those who need them most.

Market Analysis

The demand for artificial intelligence is surging across various industries. According to a report by Grand View Research, the global AI market size was valued at \$136.55 billion in 2022 and is expected to expand at a compound annual growth rate (CAGR) of 37.3% from 2023 to 2030. The increasing adoption of AI in industries such as agriculture, healthcare, real estate, and retail is driven by the need for automation, enhanced decision-making, and cost reduction.

Global AI Market Size (2023)

Education

\$ 4.2b

The education sector's 34.6% CAGR (2023-2030) highlights AI's growth potential. NBitAI is uniquely positioned to seize this opportunity by delivering tailored solutions to address industry-specific challenges effectively.

Agriculture

\$ 2.9b

Agriculture AI is projected to grow at 22.8% CAGR (2023-2030), enhancing crop management, pest detection, and weather predictions, improving efficiency, reducing costs, and driving innovation across the agricultural sector.

Healthcare

\$ 15.1b

Healthcare AI is set to grow at 37.5% CAGR (2023-2030), creating opportunities in diagnostics, personalized treatments, and administrative efficiencies, driving innovation and improving patient outcomes.

Gaming

\$ 3.8b

Gaming AI is projected to grow at 29.4% CAGR (2023-2030), enhancing personalized content, adaptive gameplay, and realism, driving innovation in game development and interactive entertainment experiences.

In agriculture, AI solutions help in predicting weather patterns, detecting pests, and optimizing crop yields. The healthcare sector is leveraging AI for diagnostics, treatment planning, and patient management.

In real estate, AI assists in property valuations and predictive analytics, while retail businesses use AI to enhance customer experiences through personalized recommendations.

Competitive Landscape

The AI market is competitive, with major players like IBM Watson, Google AI, and Microsoft Azure offering AI solutions. However, these platforms often provide generic, one-size-fits-all services that lack customisation for specific industries.

NBitAI differentiates itself by focusing on decentralised, customisable AI agents. Unlike centralised solutions, NBitAI's approach ensures data privacy and transparency, making it more appealing to industries where sensitive information is handled, such as healthcare and finance.

Moreover, NBitAI's blockchain-based governance model provides a unique advantage by empowering users to shape the platform's development. This community-driven approach fosters trust and engagement, setting NBitAI apart from traditional AI providers.

The combination of decentralisation, industry-specific customisation, and user governance positions NBitAI as a disruptive force in the AI market.

PLATFORM ARCHITECTURE

NBitAI's platform architecture is designed to deliver scalable, secure, and cost-effective AI solutions tailored to specific industries. Built on the Binance Smart Chain (BSC), the platform incorporates a decentralized model to ensure transparency, data privacy, and seamless user interaction with AI agents. This section outlines the core components of NBitAI's architecture and their functions.

Technical Overview

+ Industry-Specific Agents: AI agents tailored to sectors such as Agriculture, Healthcare, Real Estate, FinTech, and more.

+ Customization Options: Users can request modifications to agents to better suit their unique business needs.

Technical Overview

+ Binance Smart Chain (BSC): The foundation of NBitAI's infrastructure, chosen for its high throughput, low transaction costs, and smart contract functionality.

+ AI Engine: The core of NBitAI's functionality, integrating machine learning algorithms to power the industry-specific AI agents.

The AI Agent Marketplace offers users access to specialized AI agents tailored to industries like Agriculture, Healthcare, Real Estate, and FinTech. It provides customization options, allowing agents to be modified for specific business needs. Premium AI services are available through a subscription model using NBitAI tokens, ensuring users can easily access advanced, industry-specific solutions. This marketplace simplifies AI adoption, making sector-focused agents more adaptable to evolving business challenges across various industries, promoting efficiency and innovation in real-world applications.

TOKEN INTEGRATION

The NBitAI token powers platform interactions, providing access to AI agents and enabling governance participation. Users can propose improvements, vote on key decisions, and influence future developments.

The token also incentivizes community engagement, driving platform growth and ensuring continuous innovation.

Key aspects of token integration

+ Access to Services: Users must hold NBitAI tokens to utilize premium AI agents and services.

+ Incentives and Rewards: Users can earn tokens through staking, contributing to platform development, and participating in governance.

Decentralised Governance

+ Proposal System: Users can submit proposals for new features, AI agents, or platform improvements.

+ Community Engagement: The decentralized governance model fosters trust and ensures that the platform evolves according to user needs.

NBitAI's decentralized governance model empowers token holders to shape the platform's future. Users can submit proposals for new features, vote through a transparent blockchain system, and influence platform improvements. This community-driven approach fosters trust, ensuring the platform evolves to meet user needs and remains industry-focused and innovative.

TOKENOMICS

The NBitAI token is essential to the platform's ecosystem, facilitating seamless access to AI services and governance participation. It drives user engagement by acting as a gateway to premium AI agents while rewarding community contributions. The tokenomics structure ensures platform sustainability through controlled distribution, supporting development, marketing, community incentives, and long-term stability for continuous innovation.

Governance Roles

- + Decentralised Governance: Token holders propose and vote on platform developments.
- + Development Focus: Continuous platform improvement and creation of new AI agents.
- + Community Engagement: Rewards users for participation and fosters a thriving ecosystem.

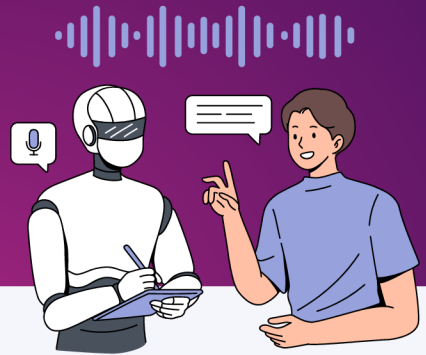
Token Utility

- + Core Utility Token: Powers interactions with AI agents and governance activities.
- + Access to AI Services: Required to access premium industry-specific solutions.
- + Incentives and Rewards: Earn tokens through contributions, staking, and governance.

The NBitAI token supply is capped at 1 billion tokens, with a phased release schedule to ensure a balanced economy. Distribution prioritizes platform growth, community engagement, and financial security. Token holders gain influence over platform development through decentralized governance, allowing them to propose improvements, suggest new AI agents, and vote on key decisions, fostering a user-driven ecosystem.

USE CASES

NBitAI's decentralised, industry-specific Crypto AI Agents provide practical solutions across a variety of sectors, addressing unique challenges faced by professionals in the USA, Canada, Europe, Australia, and New Zealand. These use cases highlight how Crypto AI Agents are tailored to industry-specific needs, driving productivity, improving decision-making, and reducing costs.



NBitAI's decentralised, industry-specific AI agents provide practical solutions across a variety of sectors, addressing unique challenges faced by professionals in the USA, Canada, Europe, Australia, and New Zealand. These use cases highlight how AI agents are tailored to industry-specific needs, driving productivity, improving decision-making, and reducing costs.

AGROTECH

Agriculture is a cornerstone industry in regions like the USA, Australia, and New Zealand. However, modern agricultural practices face significant challenges, including unpredictable weather, pest control, and yield optimization. To address these issues, AI solutions like NBitAI's AgroTech AI agent provide real-time insights that help farmers make data-driven decisions, improve productivity, and reduce risks.

THE ROLE OF AI IN MODERN AGRICULTURE

AI is transforming agriculture by offering tools to manage weather conditions, soil health, pest infestations, and crop performance. By leveraging data, farmers can make informed decisions that improve yields, reduce waste, and minimize environmental impact. NBitAI's AgroTech AI agent analyses weather data, soil reports, and satellite imagery to offer actionable insights.

KEY FEATURES OF NBITAI'S AGROTECH AI AGENT

Weather Predictions

Unpredictable weather can significantly impact farming outcomes. The AgroTech AI agent provides precise weather forecasts by analyzing historical and real-time data, helping farmers plan planting and harvesting schedules more effectively. This minimizes risks and ensures higher productivity.

Pest Detection

Pest infestations can lead to substantial crop losses. The AgroTech AI agent uses image recognition to detect pests early, allowing farmers to take targeted actions. This reduces chemical use and minimizes environmental impact. For instance, vineyards in New Zealand use AI to monitor crops and protect harvests.

Yield Optimization

Maximizing crop yields involves understanding soil health, seed selection, and farming techniques. The AgroTech AI agent provides tailored recommendations by analyzing soil data and weather patterns. Farmers in the USA use it to identify suitable crops for their regions, ensuring better investments and higher yields.

AGROTECH CONTINUED

THE IMPACT OF AGROTECH AI

AI adoption in agriculture improves productivity, reduces costs, and enhances resource management. Farmers using AI-driven solutions can adapt to changing conditions and make proactive decisions. Additionally, AI helps reduce environmental impact by optimizing water and fertilizer usage and minimizing pesticide application.

POTENTIAL USERS

- Farmers and Agricultural Businesses: Gain insights to improve operations.
- Government Agricultural Departments: Monitor trends and implement policies.
- Agri-Tech Startups: Integrate AI agents to enhance services.

REAL-WORLD APPLICATIONS

- USA: AI-driven weather forecasts help farmers reduce water waste and improve crop hydration.
- Australia: Drone-based image recognition detects pests early, protecting crops.
- New Zealand: AI monitors livestock health, optimizing milk production.

REAL-WORLD APPLICATIONS

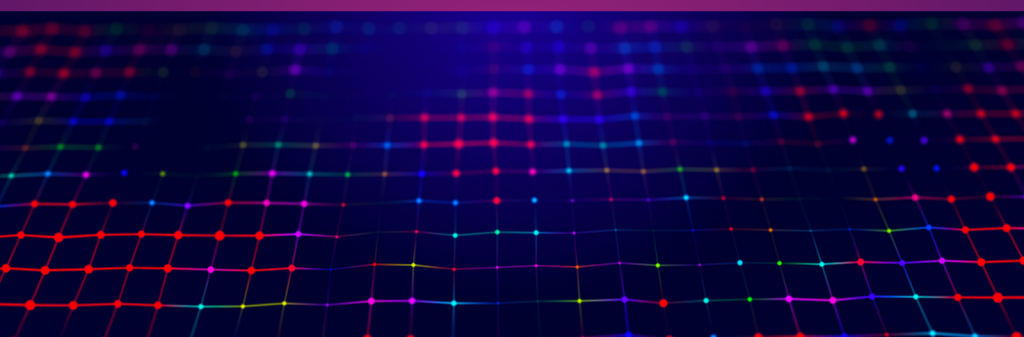
As agriculture evolves, AI's role will expand. Emerging technologies like natural language processing (NLP) and machine learning will enhance AI capabilities, allowing farmers to predict market trends, optimize supply chains, and automate operations. Blockchain integration can improve transparency and traceability, ensuring sustainable food production.

NBitAI's AgroTech AI agent addresses critical agricultural challenges, from weather forecasting to pest detection and yield optimization. By providing real-time insights and data-driven recommendations, the AI agent promotes sustainability, efficiency, and innovation, helping the agricultural sector become more resilient and productive.

HEALTHTECH

Healthcare systems in the USA, Canada, and Europe are facing immense pressure to deliver high-quality patient care while managing rising operational costs. The growing demand for efficient healthcare services, combined with the need to optimize administrative workflows, has led to increased adoption of AI-driven solutions.

NBitAI's HealthTech AI agent offers healthcare providers the tools needed to improve diagnostics, streamline treatment planning, and automate administrative tasks. By leveraging these solutions, healthcare organizations can enhance service quality, improve patient outcomes, and reduce costs.



THE ROLE OF AI IN HEALTHCARE

Artificial intelligence is transforming healthcare by providing data-driven insights that assist healthcare professionals in making informed decisions. The integration of AI into healthcare systems allows providers to analyze vast amounts of patient data quickly and accurately, reducing the time required for diagnosis and treatment planning. AI-driven solutions also help in managing administrative tasks, which frees up healthcare professionals to focus on patient care.

NBitAI's HealthTech AI agent plays a critical role in addressing key challenges in healthcare. By using advanced algorithms, the AI agent processes patient information, medical records, and research data to offer personalized recommendations for diagnosis and treatment. It also streamlines routine administrative processes, improving operational efficiency across healthcare organizations.

HEALTHTECH CONTINUED

Patient Diagnostics

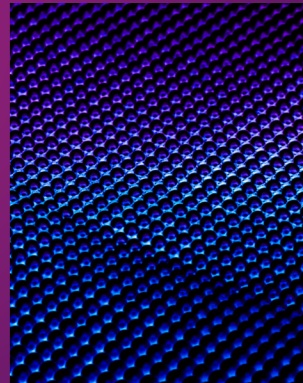
Accurate and timely diagnosis is essential for effective healthcare delivery. The HealthTech AI agent uses machine learning algorithms to analyze patient symptoms and medical histories, assisting healthcare providers in diagnosing diseases more efficiently. By identifying patterns and correlations in patient data, the AI agent can suggest potential diagnoses that may not be immediately apparent.

For instance, the AI agent can help identify early signs of chronic diseases such as diabetes or cardiovascular issues by analyzing patient records. This early detection enables healthcare providers to implement preventive measures, improving patient outcomes and reducing long-term healthcare costs.

Treatment Planning

Treatment planning is a complex process that requires careful consideration of a patient's medical history, current condition, and the latest medical research. The HealthTech AI agent provides personalized treatment recommendations by analyzing patient data alongside up-to-date medical literature.

For example, the AI agent can suggest treatment options based on a patient's specific condition and genetic profile, ensuring a more personalized approach to care. This personalized treatment planning improves the effectiveness of interventions and reduces the risk of adverse reactions, leading to better patient outcomes.



Administrative Automation

Administrative tasks, such as patient scheduling, billing, and record management, can be time-consuming and prone to errors. The HealthTech AI agent automates these processes, reducing the administrative burden on healthcare providers and improving overall efficiency.

By automating scheduling, the AI agent ensures that healthcare facilities operate smoothly, minimizing patient wait times and optimizing resource utilization. Automated billing systems reduce errors and improve the accuracy of financial records, ensuring that healthcare organizations maintain financial stability.

EDTECH

Educational institutions across Australia, Canada, and the UK are increasingly integrating technology to enhance learning experiences. NBitAI's EduTech AI agent offers personalized learning solutions that help educators manage workloads and improve student outcomes by leveraging AI-driven insights.

Features

Personalized Learning Paths: The AI agent provides tailored learning recommendations based on each student's pace and style, ensuring individualized progress.

Progress Tracking: Real-time monitoring of student performance helps educators identify areas needing improvement and take timely actions.

Potential Users

- **Schools and Universities:** To enhance classroom learning and manage administrative tasks efficiently.
- **Online Learning Platforms:** Providing personalized learning experiences to a broad audience.
- **Corporate Training Programs:** Ensuring employees receive customized learning solutions to meet development goals.



By adopting AI-driven tools, educational institutions can boost engagement, personalise learning experiences, and improve outcomes. These technologies automate administrative tasks, provide real-time insights, and bridge learning gaps, making education more efficient, interactive, and accessible while freeing educators to focus on teaching and fostering meaningful connections with students.

PROPTECH

The real estate sector across North America, Europe, and Australia is becoming increasingly competitive, with property professionals needing smarter tools to stay ahead of the curve. NBitAI's innovative PropTech AI agent is transforming how real estate agents, brokers, property developers, and investment firms operate by providing them with actionable, data-driven insights.

Features

- **Property Valuation:** AI-driven valuation models based on market trends and property attributes.
- **Lead Generation:** Identifying potential buyers and sellers through predictive analytics.
- **Market Predictions:** Insights into future market trends to help real estate professionals stay ahead.



Potential Users

- **Real Estate Agents and Brokers:** Use AI insights to price properties accurately, generate quality leads, and close deals faster.
- **Property Developers:** Identify high-potential locations, predict future market trends, and maximise project profitability through data-driven decisions.

Another critical area where NBitAI excels is lead generation. The AI agent uses predictive analytics to identify potential buyers and sellers before they even enter the market. By analysing behaviour patterns, economic factors, and local trends, the tool allows real estate professionals to proactively connect with high-potential leads, improving conversion rates and cutting down on wasted outreach efforts.

FINTECH

In today's digital age, customers expect personalised services. NBitAI offers personalised financial advice by analysing customer profiles, spending habits, and financial goals. This feature empowers institutions to offer tailored recommendations, improving customer engagement and loyalty. Providing this level of customisation enhances customer satisfaction while promoting long-term financial wellness.

Features

- **Property Valuation:** AI-driven valuation models based on market trends and property attributes.
- **Lead Generation:** Identifying potential buyers and sellers through predictive analytics.
- **Market Predictions:** Insights into future market trends to help real estate professionals stay ahead.

Potential Users

- **Banks and Credit Unions:** Use AI to detect fraud, manage risks, and provide personalised customer experiences.
- **Investment Firms:** Leverage data insights to predict market trends, mitigate risks, and optimise investment strategies.



One of the most critical challenges faced by financial institutions is preventing fraud. Traditional fraud detection systems can be slow and ineffective against sophisticated financial crimes. NBitAI's Fraud Detection feature addresses this by identifying suspicious transactions in real-time using advanced machine learning algorithms.

This proactive approach minimises financial losses and protects customers' assets, significantly improving trust in financial institutions.

RETAILTECH



Retail businesses in North America and Europe leverage AI to enhance customer experiences and streamline operations. NBitAI's RetailTech AI agent empowers retailers by analyzing customer data for personalized recommendations, optimizing inventory to reduce waste, and forecasting sales trends for strategic planning. Key users include e-commerce platforms, brick-and-mortar retailers, and consumer goods brands. This AI-driven solution helps retailers understand customer behavior and improve efficiency, enabling smarter decision-making and boosting overall business performance.

Potential Users

- **E-commerce platforms:** Deliver tailored product recommendations and enhance the online shopping experience.
- **Brick-and-mortar retailers:** Optimize in-store inventory for better stock availability and reduced wastage.
- **Consumer goods brands:** Anticipate market demands and plan production using accurate sales forecasting.

Features

- **Customer Insights:** Analyzing customer data to provide personalised recommendations.
- **Inventory Optimization:** AI-driven stock management to reduce waste and improve efficiency.
- **Sales Forecasting:** Predicting future sales trends to aid in strategic planning.

LOGITECH

Efficient logistics is vital in regions with complex supply chains like North America and Europe. NBitAI's LogiTech AI agent streamlines operations through AI-powered route optimization, inventory management, and predictive maintenance.

Features

- **Document Automation:** Automate legal document creation to save time and reduce costs.
- **Outcome Prediction:** Use historical case data and AI to accurately forecast case outcomes.
- **Compliance Monitoring:** Ensure adherence to regulations with automated checks and alerts.



Potential Users

- **Logistics Companies:** Optimize delivery routes, reduce fuel consumption, and enhance supply chain efficiency.
- **Warehouse Managers:** Improve inventory management and streamline warehouse operations.
- **Supply Chain Consultants:** Leverage AI-driven insights to design and implement efficient supply chain strategies.

It reduces costs, enhances supply chain efficiency, and prevents equipment failures. Designed for logistics companies, warehouse managers, and supply chain consultants, LogiTech empowers users to achieve sustainable and efficient logistics solutions while improving delivery times and reducing fuel consumption.

LEGALTECH

Legal professionals in the USA, UK, and Australia face growing workloads and demand for efficient case management. NBitAI's LegalTech AI agent automates routine tasks, predicts case outcomes using historical data, and ensures regulatory compliance. Key features include document automation, case prediction, and compliance monitoring. Designed for law firms, corporate legal departments, and government agencies, NBitAI's versatile platform optimizes workflows, enhances decision-making, and addresses unique industry challenges effectively.

Potential Users

- **Law Firms:** Optimize case management and automate documents.
- **Corporate Legal Departments:** Improve compliance and streamline processes.
- **Government Agencies:** Enhance regulatory adherence and case management.
- **Legal Consultants:** Leverage AI for better decision-making.

Features

- **Document Automation:** Automate legal document creation to save time and reduce costs.
- **Case Prediction:** Predict case outcomes using AI and historical data.
- **Compliance Monitoring:** Ensure legal practices meet regulatory standards with automated checks.



DEVELOPMENT ROADMAP

The NBitAI platform's development roadmap focuses on delivering decentralized, industry-specific AI solutions through continuous innovation. Divided into three phases—short-term goals, mid-term targets, and long-term vision—the roadmap prioritizes platform enhancements, user engagement, and milestone achievements to drive progress and ensure impactful AI solutions across various industries.

Short-Term Goals (0-6 Months)

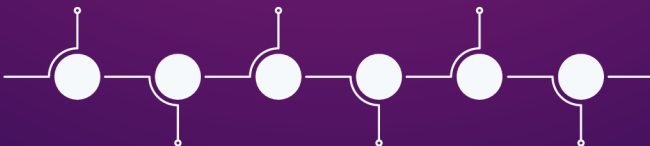
- Platform Launch on BSC: Deploy core architecture, smart contracts, and token integration. Launch AI Agent Marketplace with Agriculture, Healthcare, and FinTech agents. Conduct security audits.
- Token Distribution & Staking: Distribute NBitAI tokens and implement staking options for user engagement.
- Community & Developer Engagement: Launch marketing campaigns, attract early adopters, and offer grants/bounties to developers for creating new AI agents.

Mid-Term Targets (6-18 Months)

- AI Agent Expansion: Introduce agents for Real Estate, Retail, Logistics, and Legal sectors, and enhance existing ones based on feedback.
- Partnerships: Form alliances with industry leaders and collaborate with research institutions.
- Decentralized Governance: Implement a governance model for token holders to propose and vote on changes.

Long-Term Vision (18-36 Months)

- Global Expansion: Expand to new markets and localize AI agents.
- Advanced AI: Integrate NLP, machine learning, and predictive analytics.
- Security: Regular audits and advanced privacy measures.
- Ecosystem Growth: Expand the developer community and launch educational initiatives.



GOVERNANCE MODEL

The NBitAI platform uses a decentralized governance model, allowing token holders to propose, discuss, and vote on key decisions. This ensures transparency, security, and community-driven development.

Key Features:

- **Proposal Submission:** Token holders can submit proposals, which are reviewed before voting.
- **Voting Mechanism:** Voting is done via smart contracts, with vote weight based on token holdings.
- **Implementation:** Approved proposals are executed through smart contracts.
- **Community Governance Board:** Oversees the proposal process, ensuring alignment with platform goals.

Governance in Action:

- **AI Agent Proposals:** Community members can suggest new AI agents for specific industries.
- **Platform Upgrades:** Token holders vote on proposals for platform improvements.
- **Partnership Proposals:** Members can propose strategic partnerships to enhance the platform's capabilities.

NBitAI's decentralized governance fosters a collaborative, innovative, and sustainable ecosystem, empowering token holders to shape the platform's future.

Benefits of Decentralized Governance:

- **Transparency:** All proposals and voting results are recorded on the blockchain.
- **Security:** Smart contracts prevent manipulation of the voting process.
- **Community Engagement:** Encourages active participation and accountability among token holders.
- **Scalability:** Supports efficient decision-making as the platform grows.

SECURITY AND COMPLIANCE

NBitAI prioritizes security and compliance to build trust and support long-term adoption. The platform ensures user data protection, secure smart contracts, and adherence to global regulations through proactive measures.

Smart Contract Audits

- **Third-Party Audits:** Independent cybersecurity firms conduct regular audits.
- **Continuous Monitoring:** Ongoing code reviews address emerging threats.
- **Bug Bounty Program:** Community incentivized to report vulnerabilities.



Data Privacy

- **Decentralized Storage:** Prevents single points of failure.
- **Encryption:** Secures data in transit and at rest.
- **User Control:** Allows users to manage privacy settings.

Regulatory Compliance

- **GDPR:** Compliance with European privacy regulations.
- **KYC/AML:** Anti-money laundering protocols.
- **Legal Partnerships:** Stay updated on regulatory changes.

NBitAI's commitment to security, privacy, and compliance ensures a secure, trusted platform for decentralized AI services.

COMMUNITY AND ECOSYSTEM

NBitAI's success depends on a vibrant community and ecosystem that fosters collaboration, innovation, and adoption. The platform engages developers, forms strategic partnerships, and employs user acquisition strategies to ensure scalability and sustainability.

Developer Engagement

- Grants: Financial support for developers creating AI agents.
- Bounties: Rewards for solving technical challenges.
- Hackathons: Encouraging creativity and new use cases.
- Community Forums: Platforms for collaboration and feedback.

Partnerships

- Industry Leaders: Collaborations to co-develop AI agents.
- Academic Institutions: Advancing AI algorithms.
- Technology Providers: Enhancing user experience with third-party integrations.
- Government Agencies: Promoting adoption and regulatory compliance.



User Acquisition

- Marketing Campaigns: Targeted efforts in key regions.
- Educational Content: Providing resources to educate users.
- Referral Programs: Incentives for user referrals.
- Localized Support: Addressing region-specific needs.

NBitAI's strategies ensure a growing, engaged ecosystem to meet evolving industry demands.

RISK ASSESSMENT

Risk assessment is vital for NBitAI's long-term success. By identifying challenges and implementing mitigation strategies, NBitAI ensures platform performance, user trust, and market adoption.



Potential Challenges:

- **Technological Hurdles:** Need to evolve with advances in blockchain, AI, and data security.
- **Market Competition:** NBitAI must differentiate itself in a competitive AI and blockchain market.
- **Regulatory Risks:** Compliance with complex, evolving regulations across jurisdictions.
- **User Adoption:** Ensuring a seamless experience to drive adoption and retention.
- **Security Threats:** Protection against hacking and data breaches.

Mitigation Strategies:

- **Continuous Updates:** Regular R&D to stay ahead in technology.
- **Unique Value Proposition:** Industry-specific AI solutions and decentralized features.
- **Regulatory Compliance:** Collaborating with legal experts for compliance.
- **User-Centric Development:** Prioritizing user feedback for engagement and retention.
- **Robust Security:** Regular audits, decentralized storage, encryption, and a bug bounty program.

NBitAI's proactive risk management ensures platform resilience and long-term success.



We are a nexgen AI solutions company building disruptive products for various industry verticals. We help businesses harness the full power of Ai and Blockchain.

London | Dubai | Sydney | New York

www.NBitAI.com

